

An Introduction to Java Development with NetBeans IDE

A NetBeans IDE Project Basics Tutorial

by Dirk Schreckmann

In a nutshell, what is the NetBeans IDE?

NetBeans IDE is a free, open source, popular (with approximately [1 million downloads](#)), integrated development environment used by many developers. Out of the box, it provides built-in support for developing in Java, C, C++, XML, and HTML. And this author especially likes the support for editing JSPs, including syntax highlighting, HTML tag completion, JSP tag completion, and Java code completion.

NetBeans IDE is available for free downloaded at <http://www.netbeans.org>

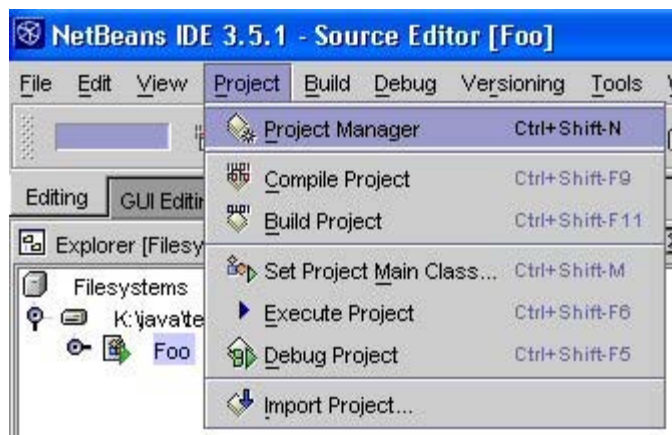
Following are step-by-step instructions to help NetBeans IDE greenhorns to get started developing Java applications with NetBeans IDE. The basic steps described are as follows.

1. Create a new project
2. Mount a directory - specify a location to save project files
3. Add a new class to the project
4. Compile and run a Java program

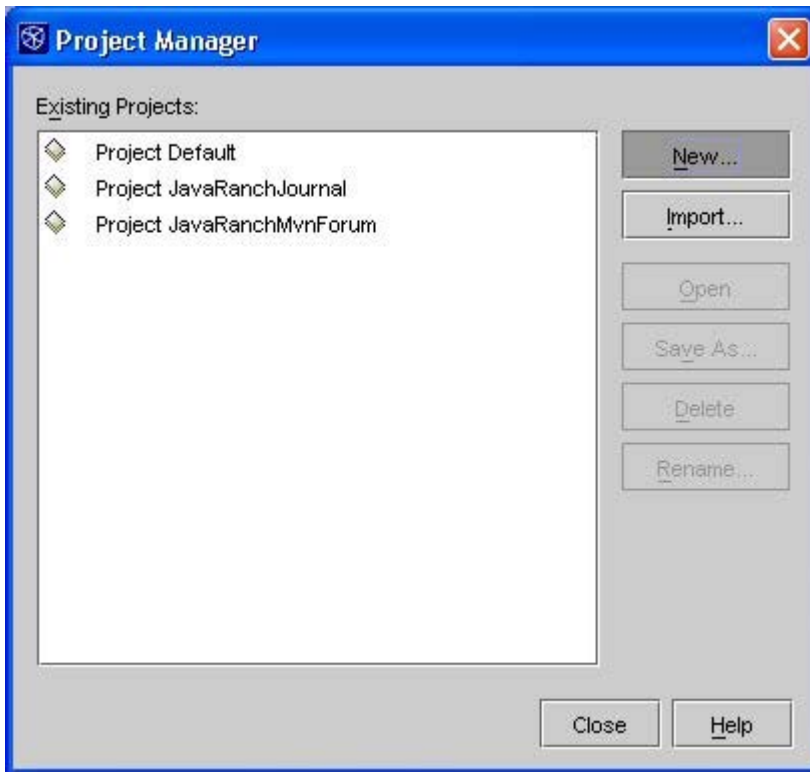
1. Create a New Project

Start NetBeans.

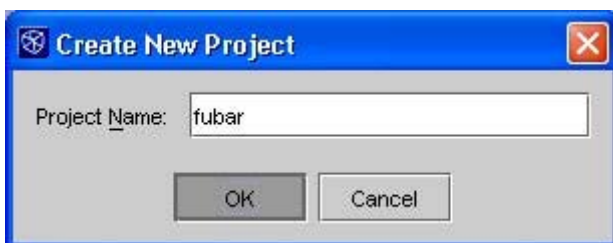
Start a new project: Main Menu -> Project -> Project Manager -> New Project



Click New.



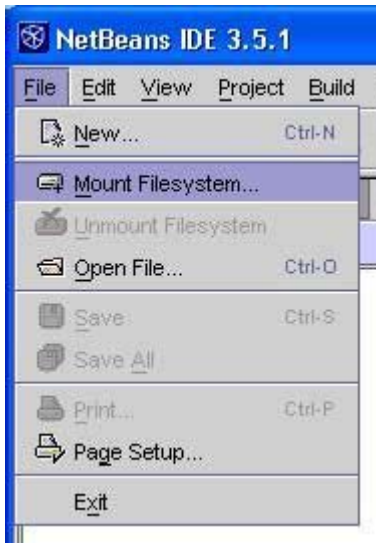
Give the project a name. Click OK.



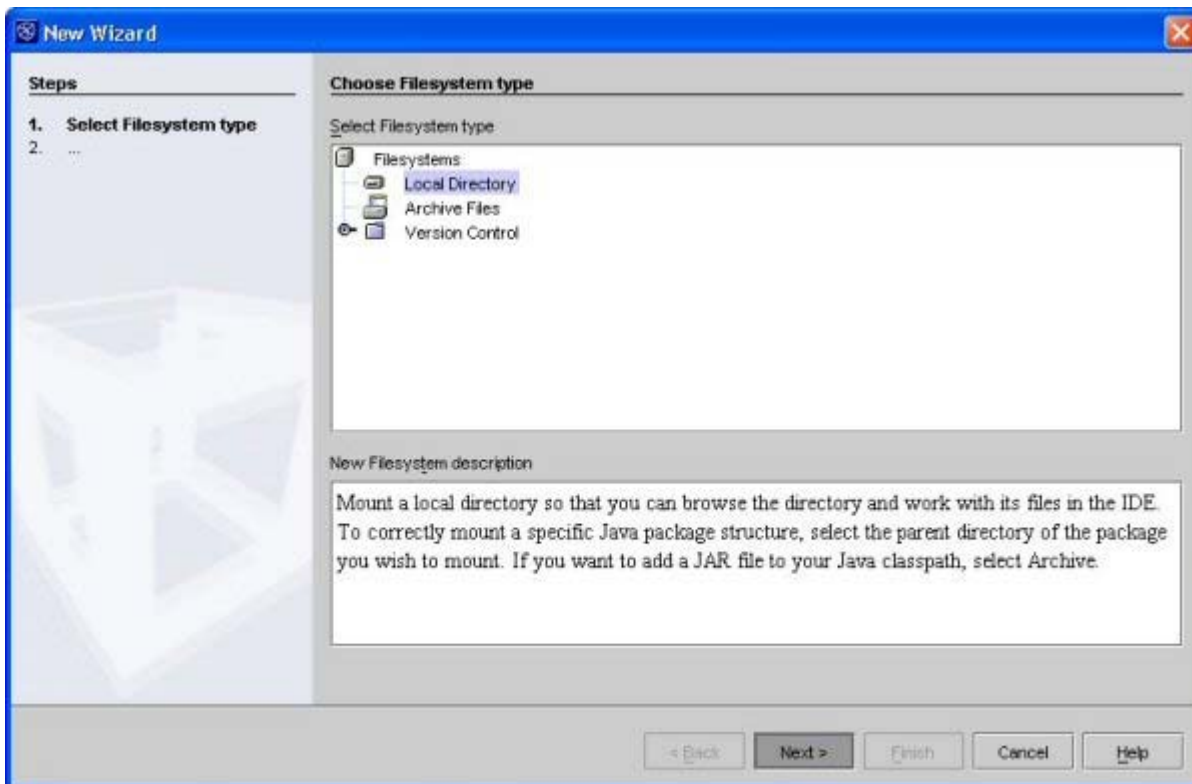
2. Mount a directory - specify a location to save project files

To specify a location on a disk drive where project files will be stored, mount a directory as part of the project.

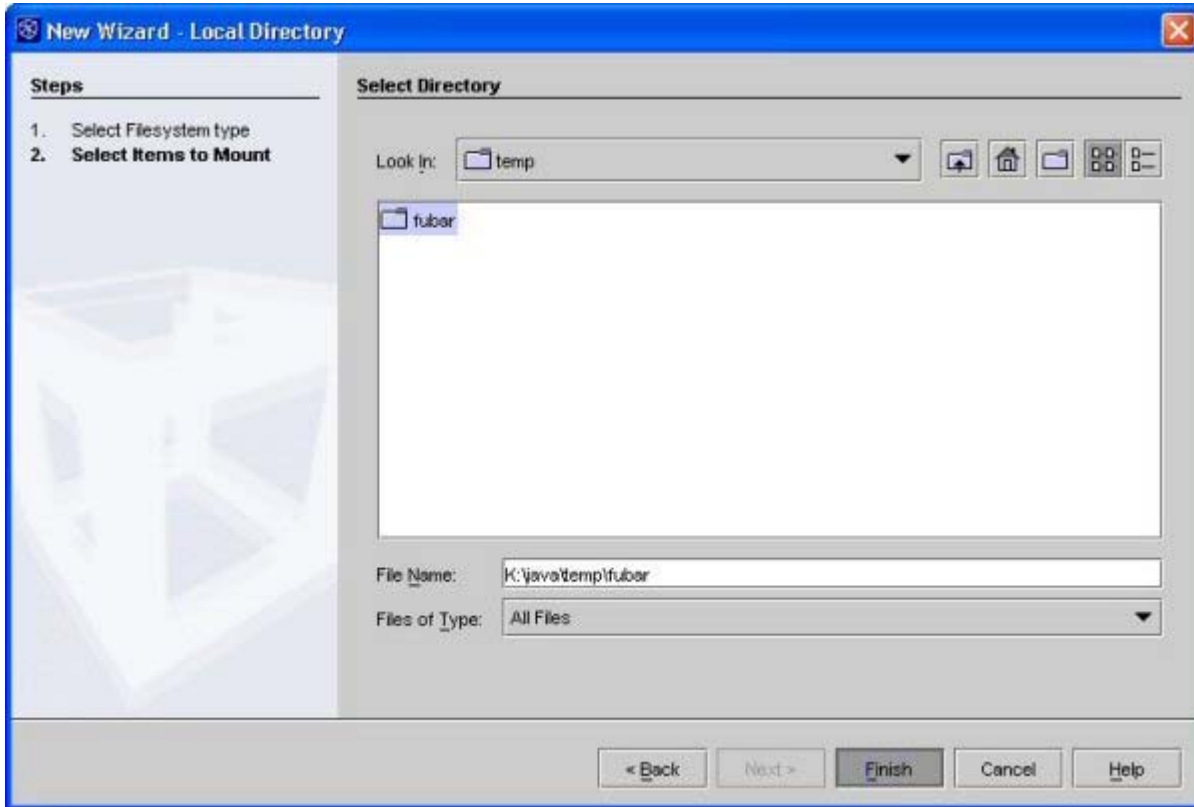
To the project, add a directory to hold project files: Main Menu -> File -> Mount Filesystem...



Under Filesystems, Select Local Directory. Click Next.

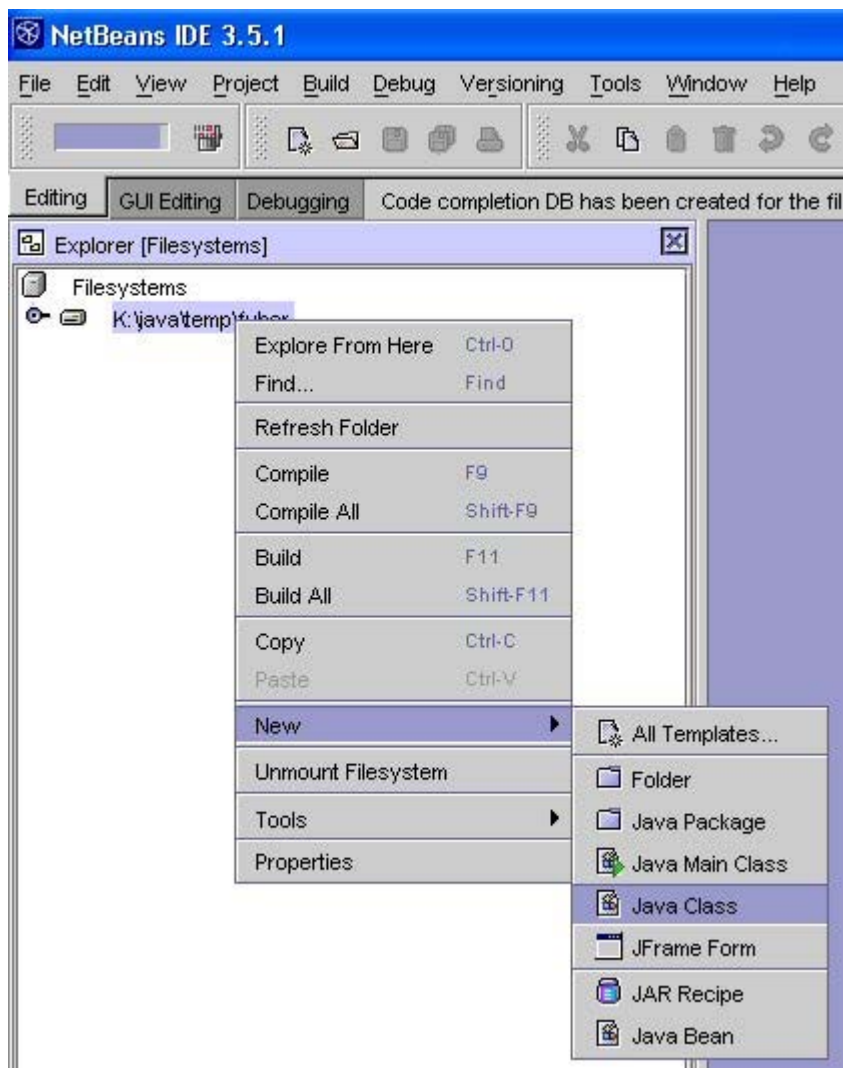


Select a directory to hold the project. (Note: Don't open the desired directory, just select it. If you accidentally open the desired directory, just click the up directory arrow next to the "Look in" drop down list, and then select the desired project directory with a single click.) Click Finish.

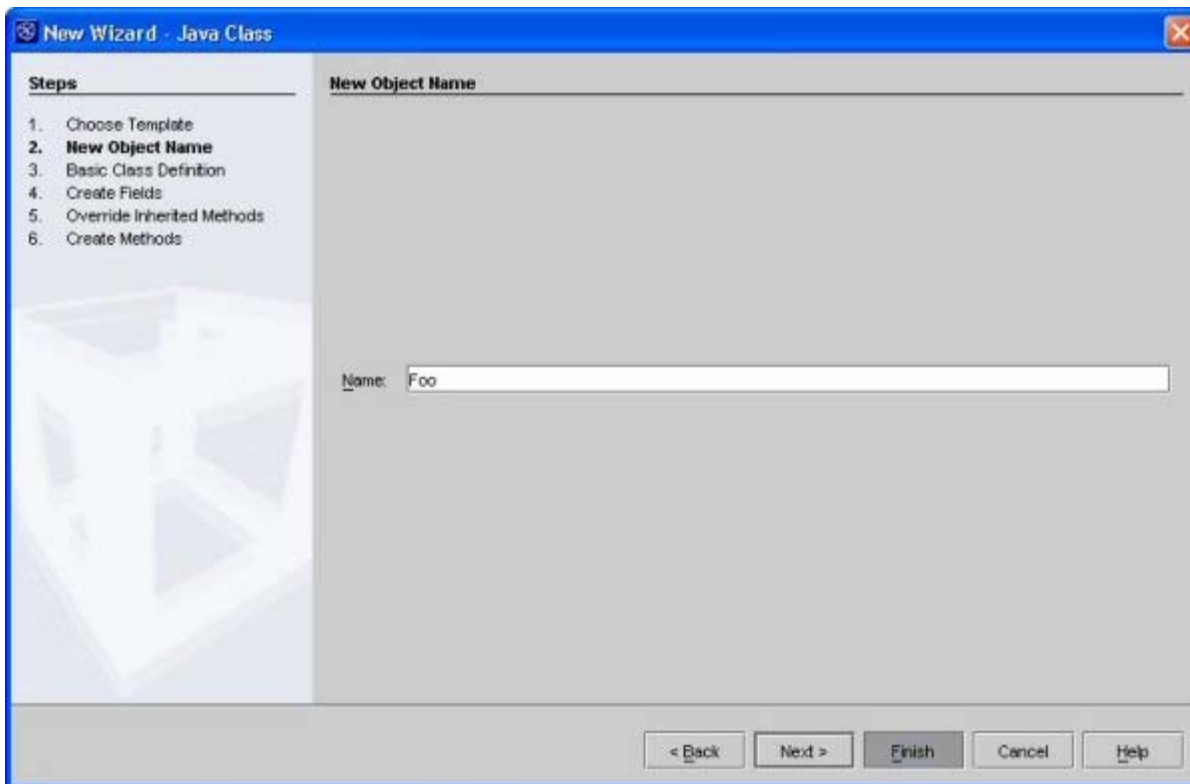


3. Add a new class to the project

Right mouse click on a mounted project directory. Select New -> Java Class

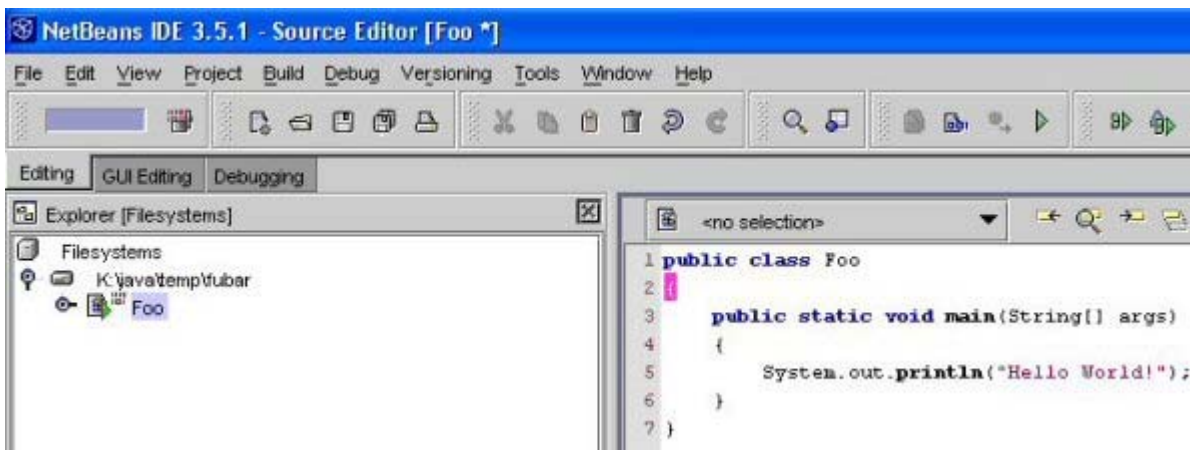


Name the class and click Finish.



Edit the Java class as desired. Following is the code used in this tutorial.

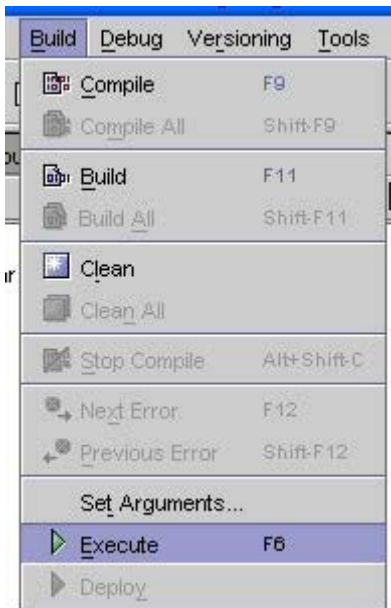
```
public class Foo
{
    public static void main(String[] args)
    {
        System.out.println("Hello World!");
    }
}
```



4. Compile and run a Java program

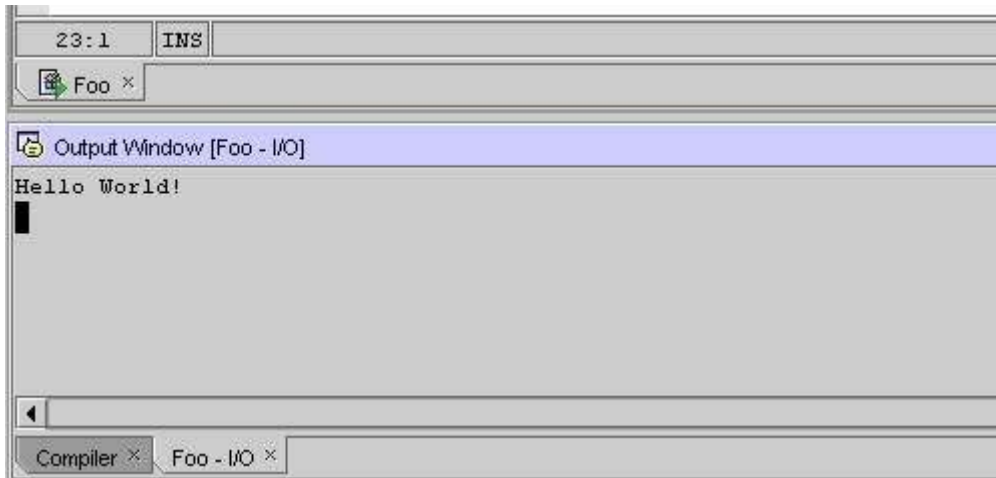
In the Filesystems Explorer, assure that the main Java class is selected.

Go to Main Menu -> Build -> Execute to compile and run the main Java class in one step.



Note: To just compile a class, go to Main Menu -> Build -> Compile.

After executing, you should see results similar to the following. (Note that the NetBeans IDE captures console output, not unlike JBuilder. So, the output of this program appears in the lower IDE panel.)



Resources

Again, NetBeans IDE is available for free download at www.netbeans.org

For further information and assistance on using NetBeans IDE, visit [The NetBeans Community](#) and don't forget to mosey on over to [The IDEs and Other Tools Forum](#) in the JavaRanch Saloon.